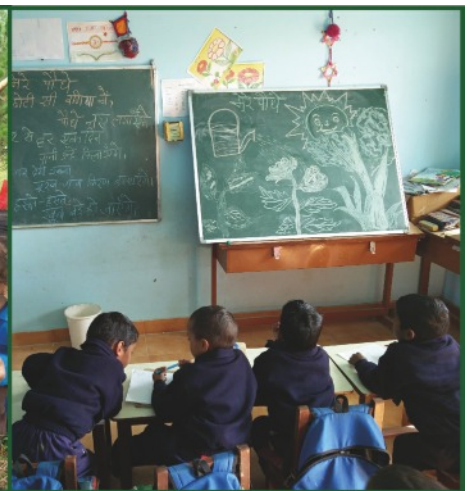


Nature School India
PARAMARTH AWADHAWAN
(means "Way to the highest goal")



Association Pan Terra

New Impulses for Human and Earth

**Creating a new school culture through Integral Learning.
If not now, when!**

High School for Integral Learning
Extension of the Nature Primary School India
PARAMARTH AWADHAWAN

Funding body

Pan Terra Association, Switzerland - www.Pan-Terra.org
Shin Shiva Charitable Trust, India - www.ssctindia.org

Website **www.nature-school-india.com**

Region Shrikhal, Pauri Garhwal, Northern India, in 1800 m altitude

Important questions for a new school culture

If we look really critically at our today's educational system, don't we unfortunately have to realise, that school is often used and abused as an instrument to prepare children to be useful members of society? Does this not educate a child who is being influenced by the technical, material and artificial world to become part of it and to function?
How do the children feel about this? As a wheel or a screw in this machinery, overloaded with one-sided mental knowledge?

School of Integral Learning is a school

- for the souls, for spirituality, and suitable for all situations in life,
- which recognises, appreciates, protects, strengthens and promotes natur and human nature as the basis of all our lives,
- which in the best way allows and realises a meaningful development and unfolding for the children,
- which preserves for all children joy and pleasure of their own discovery and creation as a treasure, so that what they have learned can find space in their being as a fruitful ability,
- which is aware of the wholeness of the human being,
- with a healthy and health-giving philosophy,
- with an education that opens up vitality, joie de vivre, the art of living and the meaning of life to the young and later adult human being,
- which after graduation sends out a being who is self-confident and content. Sends a young person into the world with reliable strength, with radiance of natural noble joy and freedom and as an invigorating fountain in his environment.



Current primary school building



Location of the school



at 1800 m - with a view of the Himalayas



Region



Primary school extension
Completed April 2017

Why is Integral Learning and Intuitive Doing and a new culture with nature so essentially important?

- Integral Learning is a continuous process in the universe in which all being and all intelligence participates in a receiving and giving way. The child is still intimately interwoven with this great integral life-flow and this must be maintained and encouraged at all costs.
- Childlike learning is Integral Learning and this is a jubilation for the I-AM, the true essence of man.
Man become what you are – this is the future.
- As a result, the human being can no longer be manipulated and is aware of his own inherent powers, creative knowledge and true divine origin.
- It is a constant researching, wondering, trying out, getting to know, comprehending, remembering, grasping, by which the child gets to know itself and understands the world more in its entirety.
- It is a "to be able to learn at any time all of everything" and enables the child from a very early age to perceive the inner world more consciously, thus it also becomes possible for it to perceive the outer world better.
- The abilities, talents and powers with which the child has come to earth as well as its original disposition to be creative and to create together with others for the earth and all beings are strengthened and promoted.
- The children are shown ways that allow the "naturally sacred" to emerge within themselves.
- Man must learn to say "yes" to themselves!
- In this way, a new culture can be developed together with nature, and a God-conscious natural science, natural agriculture and preservation of nature can be brought into being.
- It's an all-encompassing teaching and education that can never be achieved by an intellectual knowledge, no matter how valuable.
- A new appreciation and revitalisation of the word, by which language is again recognised as a creative instrument of one's own body.

These are only a few important points that epitomise Integral Learning and Intuitive Doing. These points could be continued endlessly as life in its diversity shows and teaches us every day.



Children and teachers design the school rooms



The children tend the garden



Re-cultivate terrace cultivation



Medical camps for the population



Sustainability - Solar plant



Transfer with own school bus

Why should the project be funded?

- Nowadays there is an urgent need for new powerful impulses for the school system worldwide. Wherever we bring powerful and meaningful ideas to earth, they can be a role model and a seed worldwide.
- The PARAMARTH AWADHAWAN Nature School, because of its location and its philosophy and teaching content, is forward-looking and a long-term pilot project to ensure a peaceful and happy future for the children.
- For this reason, attention has been and will continue to be paid to a stable construction (earthquake-proof). Also constructions are carried out according to Vedic, sensible and bio-energy criteria (www.carbometum.ch) in order to create optimal conditions for the children and the all-embracing teaching.
- The school is equally open for poor and deprived as well as for well-situated and rich families. Through the mutual help of rich and poor, the strength of the people would grow.
- The construction of the High School enables about 300 children to receive a complete education from kindergarten to the official High School degree and thus creates a basis for further studies or vocational training.
- For many parents in the region, a high school is too costly, as they are usually private and charge fees.
- The High School of Integral Learning would offer deprived families the chance that their children would not have to migrate to urban centres after their graduation. With the help of the comprehensive education in the PARAMARTH AWADHAWAN Nature School the young adults would be able to reshape the future of society in terms of sustainable development and implement this directly in their region.
- Furthermore, the local mountain culture and cultural assets could be preserved and maintained.
- The parents' desire for this development was demonstrated by the fact that many parents volunteered to help with the construction of the extension to the Primary School in 2016 in order to move this school project forward.

Current situation

- The school is financed solely by donations from private individuals and small businesses, mainly from Europe. All children are currently from deprived families and attend the school free of charge.
- All teaching materials and school uniforms, bus transfers, teachers and staff salaries, school maintenance costs are paid for by donations.
- Currently, only early childhood and primary education is possible with six classes and 77 children. All children must leave the school after completing the 6th class and transfer to a state school.
- The demand for different age groups is constantly increasing.
- However, no more children can be admitted as the space for students and teachers has again reached its limit.



A school education for nature



Preserving cultural assets



lunch together



All-embracing teaching



Music - Song - Dance



Learning through play with joy

What has been achieved in the project so far?

For 17 years, the entire team of the Nature School has done intensive pioneering and development work and has shown perseverance.

1. There are 77 children in 6 classes attending the school.
2. 6 teachers, 1 childcare worker, 1 cook, 1 caretaker, 2 bus driver are continuously at the school.
3. Sports, games, yoga, singing, dance, heritage conservation, handcrafts, spirituality, English, care of the garden and trees are currently part of the curriculum.
4. Conducting tree planting activities with the children - which serve to reforest and store water for the surrounding area. So far, more than 1200 trees have been planted.
5. Medical camps at regular intervals, which are available to the local population free of charge.
6. Opening of the extension to the primary school in March 2017. This conversion was an important criterion for the award of state recognition.
7. 2017 Conversion of the previous school building to expand the classrooms in order to be able to maintain operation of the Primary School.
8. State recognition was achieved on 12 May 2017. Only three out of 50 private schools have received recognition.
9. In March 2018, an investment was made in a solar energy system.
10. Purchase of a school bus for the transfer of the children.
11. In 2019 to 2022, 5 children have qualified for scholarships at the renowned Rajeev Gandhi Navodaya School.
12. Guest teachers from different countries come to visit.

Description of sustainability

Integral Learning is a pioneering work that enables human beings to develop on all levels and furthermore, many undiscovered potentials can unfold. It promotes the development of people who are conscious of the earth in its entirety and thus contribute intensively to the preservation of this planet through their individual and free education.

In the long run, the school project helps to avoid emigration. With the revival of terraced cultivation, erosion can be prevented, and through the planting of new trees and a forward-looking understanding for the nature of the young people, a positive change in climate can be made possible, which counteracts the prolonged periods of drought.

If the school can reach its true and full purpose and the High School of Integral Learning can be built, children from rich families can also be admitted, which would ensure maintenance and continuity and enable independence.

In addition, it's planned to familiarise teachers from different countries with these goals through further training programmes, thus enabling the emergence of such schools in other parts of the world as well.

The offers of the Nature School are interdisciplinary. They dissolve a view limited to only discipline in favour of a holistic approach.

Through student and teacher exchanges, culturally unifying friendships can be established. This is an essential contribution to peace.



Development of individuality



English lessons



Colourful clothes made from natural materials



Guest teachers from different countries

Why is the construction of the High School unavoidable?

- In India, land is available and construction prices are 20 times cheaper to implement a project of this size. A great opportunity to move forward with a pilot project.
- Children should be able to attend school from kindergarten to high school or vocational qualification in order to be able to complete their school education up to state recognition at a higher level.
- The school continues to grow. There are many requests from parents. Therefore, an expansion in the future is inevitable.
- Increasingly, the children are now at the age where they have to leave school after the 6th class in order to complete their graduation at higher schools. This often involves sadness for children and parents and the request to be able to stay.
- There is a risk that the children will lose the Integral Education of the Primary School when they move to another school and will have difficulties in re-establishing themselves in state schools.
- The spatial capacity of the primary school has been exhausted in the meantime in order to be able to accommodate even more children.
- Up to 300 children from both poor and rich backgrounds and also from more remote regions can be admitted. Thus, there is a prospect that the school will be able to sustain itself in the long run and will be subsidised by the authorities.
- More jobs for teachers and staff will be created.
- The new building will provide adequate accommodation for the teachers, boarding students as well as international guest speakers and exchange students. Furthermore, it is urgently necessary to be able to accommodate more subject teachers.
- A large hall allows extensive cultural events with guests from politics and public life, music and dance events, yoga and dance events, yoga courses and teacher training.
- Vocational craft centres for traditional trades are planned, which will also counteract a migration of young people to the cities and can revitalise the Garhwal area.
- Integral Learning and Intuitive Doing is a forward-looking school education that promotes the whole person and brings a new school Culture.
- With the help of the comprehensive education, the students will be able to reshape the future in terms of sustainable development and implement it directly in their region.
- Integral Learning involves all areas of life and nature with its different kingdoms and powers. The student will thereby get aware of the earth in its entity and contribute to the preservation of this planet through this education.



Learning must be a joy



Litter action in the village with the pupils



Over 1200 trees planted



Festival with guests from the government



Physical awareness exercises



Team of teachers

Building plans and estimated cost planning

The construction plans have been available for many years and are waiting to be realised. The plans can be viewed at any time.



- 1 Former primary school building
- 2 Classrooms
- 3 Classrooms
- 4 Boarding Student Accommodation
- 5 Accommodation teachers
- 6 Inner courtyard Artrium
- Mainhaus with large hall and temple**



Excavation and area for planned high school

Construction stages and estimated costs

1st stage	488	m ²	
Basement East	1360	m ²	
Main house	1848	m ²	
total			990'000.00 €
2. Etappe			
Basement West	600	m ²	
South extension	388	m ²	
total	988	m ²	550'000.00 €
2. Etappe			
Anbau Nord	388	m ²	
total	388	m ²	210'000.00 €
total			1.750.000.00 €

Spendenkonto

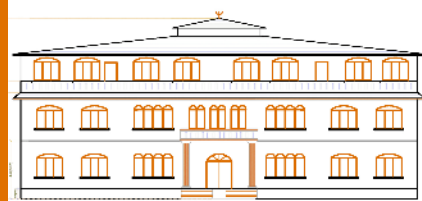
Account holder: Verein Pan Terra
Intended purpose: High school

St. Galler Kantonalbank, City St. Gallen
Bank code: 78162 / BIC: KBSGCH22

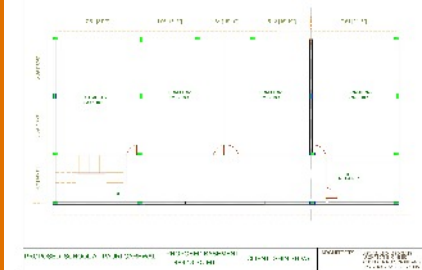
Swiss franc account: 6206.4866.2001
IBAN: CH79 0078 1620 6486 6200 1

Euro account: 6206.4866.2003
IBAN: CH25 0078 1620 6486 6200 3

**Thank you very much
for your trust and your help.**



Construction plan of the High School



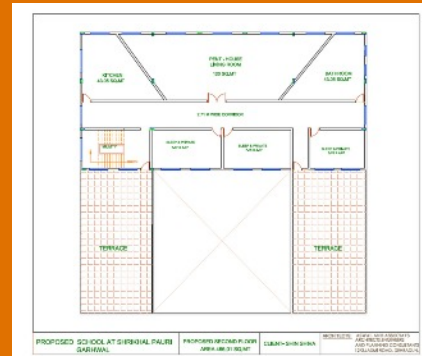
Lower ground floor



Ground floor



1st floor



2nd floor

Association Pan Terra

Platz 230, 9428 Walzenhausen, Switzerland
Phone: +41 (0)79 406 23 11
www.Pan-Terra.org

Contact Persons:
Bhagin R. Kellenberger - bhagin@pan-terra.org
Susanne Ganns - susanne@pan-terra.org